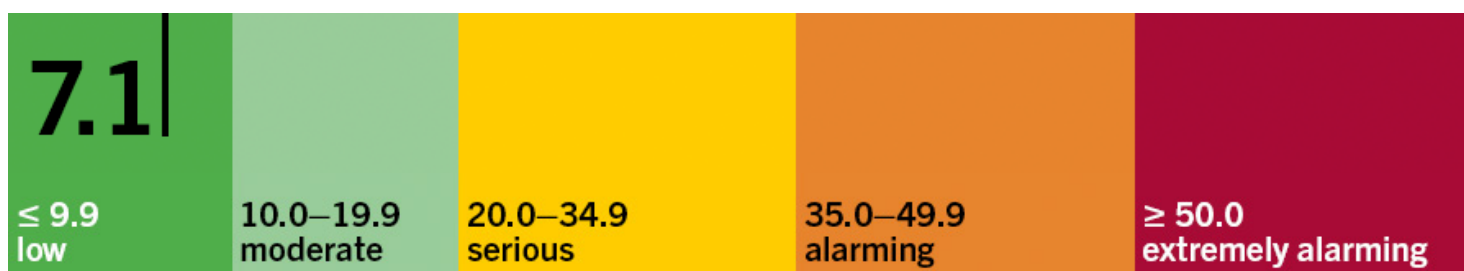
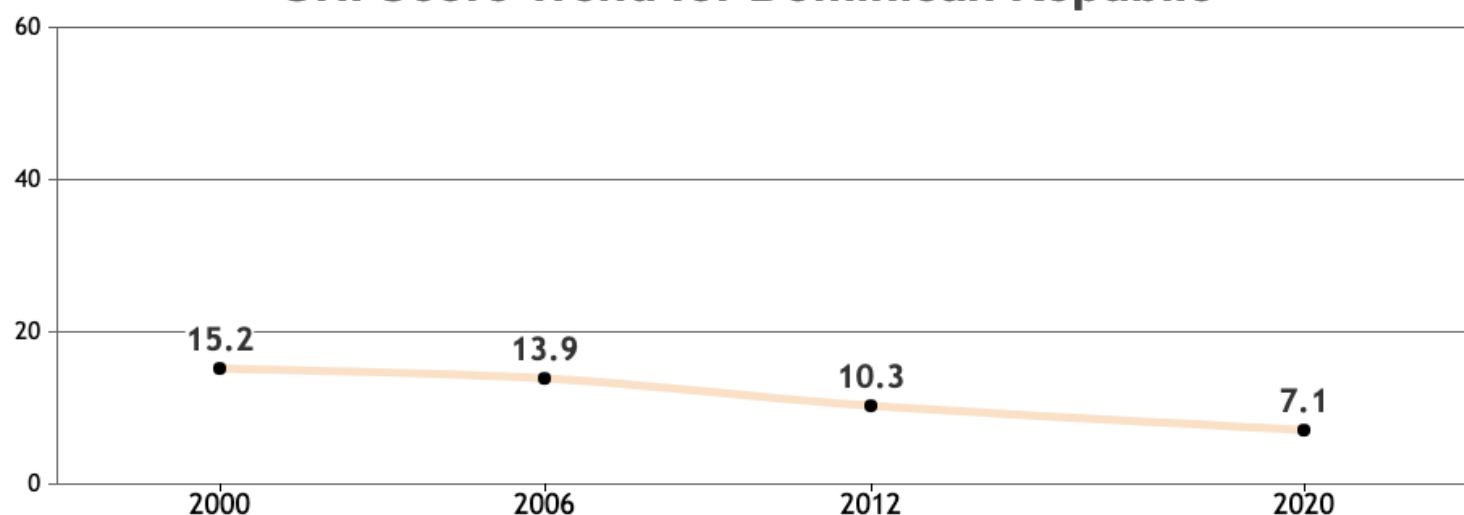


GLOBAL HUNGER INDEX 2020: DOMINICAN REPUBLIC

In the 2020 Global Hunger Index, Dominican Republic ranks 32nd out of the 107 countries with sufficient data to calculate 2020 GHI scores. With a score of 7.1, Dominican Republic has a level of hunger that is low.



GHI Score Trend for Dominican Republic



NOTE: Data for GHI scores are from 1998–2002 (2000), 2004–2008 (2006), 2010–2014 (2012), and 2015–2019 (2020).

ABOUT THE GLOBAL HUNGER INDEX

The Global Hunger Index is a peer-reviewed annual report, jointly published by Concern Worldwide and Welthungerhilfe, designed to comprehensively measure and track hunger at the global, regional, and country levels. GHI scores are calculated each year to assess progress and setbacks in combating hunger. The GHI is designed to raise awareness and understanding of the struggle against hunger, provide a way to compare levels of hunger between countries and regions, and call attention to those areas of the world where hunger levels are highest and where the need for additional efforts to eliminate hunger is greatest. This country profile is based on data and information from the Global Hunger Index 2020.

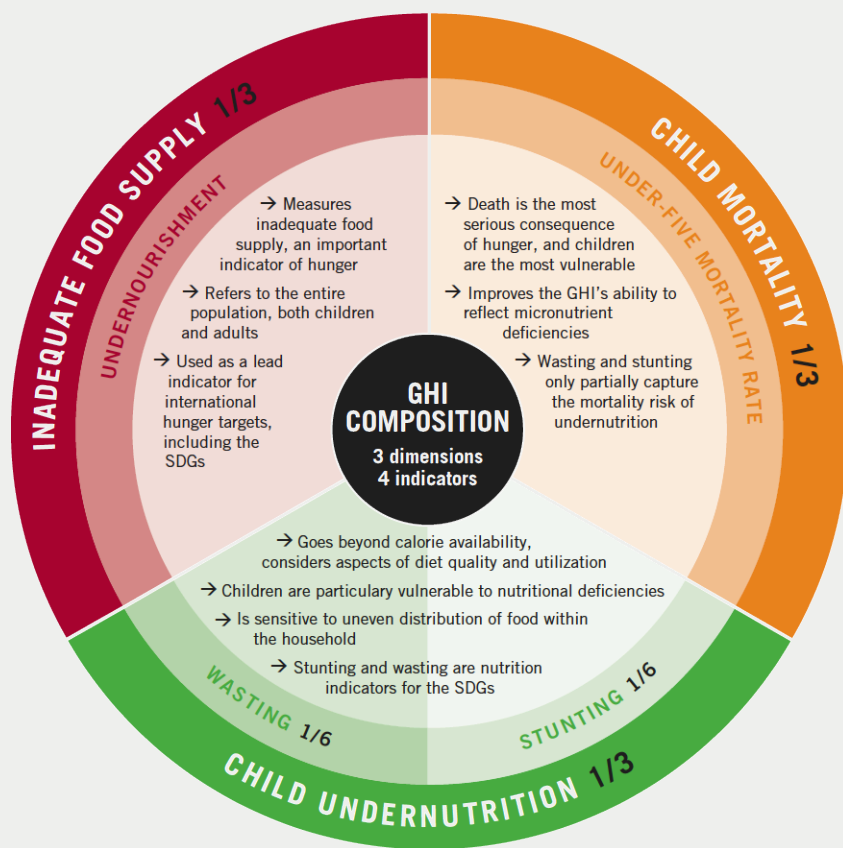
For more information please see the Global Hunger Index 2020 at www.globalhungerindex.org

Publication date: October 2020

CONCERN
worldwide

 **welt
hunger
hilfe**

GLOBAL HUNGER INDEX 2020: DOMINICAN REPUBLIC

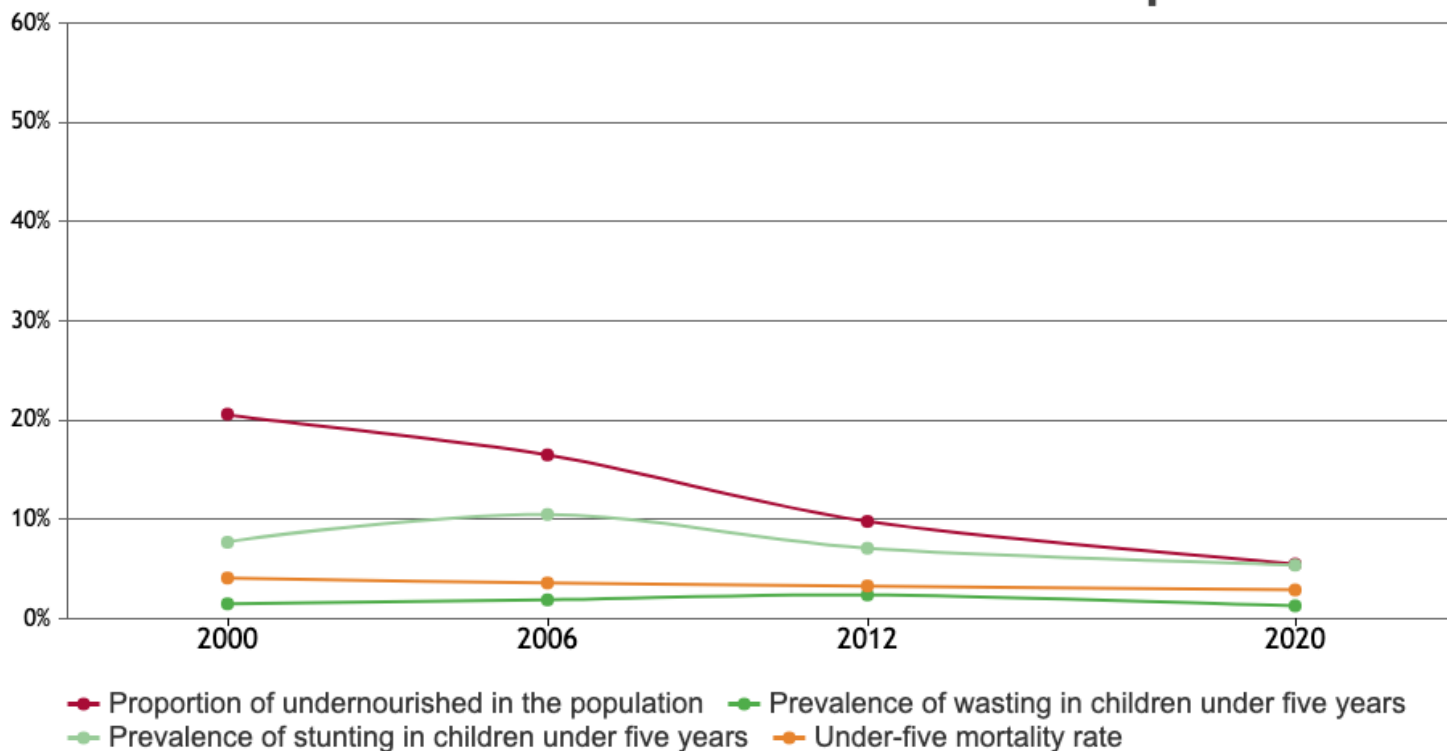


The GHI score incorporates four component indicators: undernourishment, child wasting, child stunting, and child mortality. Using this combination of indicators to measure hunger offers several advantages.

The indicators included in the GHI formula reflect caloric deficiencies as well as poor nutrition. The undernourishment indicator captures the nutrition situation of the population as a whole, while the indicators specific to children reflect the nutrition status within a particularly vulnerable subset of the population for whom a lack of dietary energy, protein, and/or micronutrients (essential vitamins and minerals) leads to a high risk of illness, poor physical and cognitive development, and death.

The inclusion of both child wasting and child stunting allows the GHI to document both acute and chronic undernutrition. By combining multiple indicators, the index reduces the effects of random measurement errors.

Trend for Indicator Values - Dominican Republic



NOTE: Data for child stunting, and child wasting are from 1998–2002 (2000), 2004–2008 (2006), 2010–2014 (2012), and 2015–2019 (2020). Data for undernourishment are from 2000–2002 (2000), 2005–2007 (2006), 2011–2013 (2012), and 2017–2019 (2020). Data for child mortality are from 2000, 2006, 2012, and 2018 (2020). See Appendix C of the 2020 GHI report for additional information regarding the selection of indicator data.